

SPOTLIGHT

INTRODUCING

ZeptoMetrix's SIV Western Blot

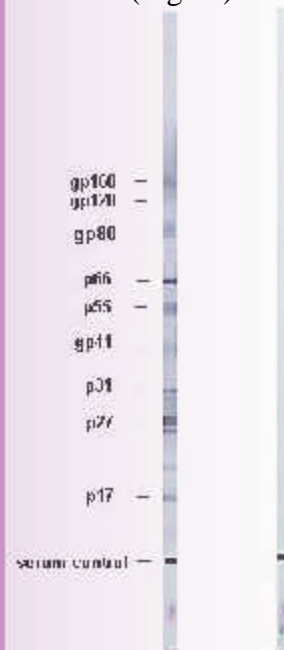


ZeptoMetrix Corporation
872 Main Street
Buffalo, NY 14202
Tel: 800 274 5487
Fax: 716 882 0959
Website:
www.ZeptoMetrix.com

SIV WESTERN BLOT

Because SIV is the most closely related lentivirus to HIV, SIV infection in monkeys has become the best animal model for studying the pathogenesis of, and efficacy of vaccines against HIV infections in humans.(1) Sero-epidemiological analyses conducted at the New England Regional Primate Center have established that SIV and HIV-2 can be used interchangeably as an antigen source, whether screening for antibodies in monkeys or humans.(2)

Example of Reactive Control (Fig.1a) and Negative Reaction (Fig.1b).



SIV WESTERN BLOT

The ZeptoMetrix SIV Western Blot assay is a qualitative enzyme immunoassay for the in vitro detection of antibodies to SIV in serum or plasma.

The assay is supplied as 10 (cat. # 0801500) and 30 (cat.# 0801501) blot kits and contain all reagents necessary to perform the assay. Each nitrocellulose strip contains SIVMAC viral proteins and a serum control band for quality control purposes. The ZMC SIV Western blot assay is available for Research Use Only. A product information sheet is available at:

<http://www.ZeptoMetrix.com>.

Please contact us directly for pricing and further details.

Other products available from ZMC include HIV-1 p24, SIV p27 and HTLV p19 antigen capture assays, monoclonal antibodies and purified viral lysates (HIV, HTLV, SIV). Cytokines and growth factors are also available as well as quantitative assays for detecting human IgG, IgM, IgA and mouse IgG and IgM.

SIV WESTERN BLOT

1. Beer, B.E., E. Bailes, P.M. Sharp, V.M. Hirsch, 1999. Diversity and Evolution of Primate Lentiviruses. WWW document URL <http://hiv-web.lanl.gov/REVIEWS/Beer99/Beer>
2. Kestler, H.W., Y. Li, Y.M. Naidu, .V. Butle, M.F. Ochs,G. Jaenel, N.W. King, M.D. Daniel, R.C. Desrosiers,1988, Comparison of Simian Immunodeficiency Virus Isolates. Nature 331:619-622.

