

PRODUCT CHARACTERISTICS

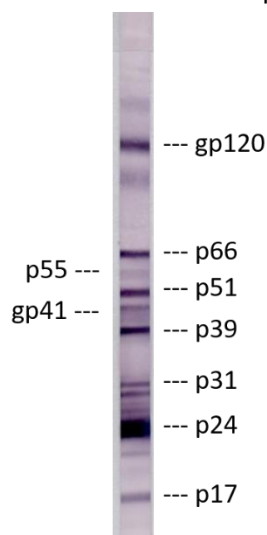
Concentration:	~5 mg/mL determined by BCA protein assay, see vial.
Specificity:	Reacts with all the major viral proteins including p17, p24, p31, p39, gp41, p55, p51/p66 and gp120.
Source:	HIV-1 immune human serum.
Purification:	Ammonium sulfate precipitation and ion exchange chromatography.
Purity	~60% Immunoglobulin, 30% Human Serum Albumin and 10% other serum proteins as determined by Coomassie Blue stained SDS-PAGE.
Formulation:	500 µg in PBS, pH 7.2. No preservatives added.

STORAGE

Store at -10 °C or below. Repetitive freezing and thawing is not recommended (aliquot as necessary). Thawed material may be stored at 4°C for short-term usage.

APPLICATIONS

Western Blot: Use at 1-10 µg/mL for detecting HIV-1 proteins.



Following SDS electrophoresis, HIV-1 IIB virus lysate proteins were blotted onto nitrocellulose membrane and incubated with 10 µg/mL of Anti-HIV-1 polyclonal antibody. An alkaline phosphatase-labeled goat anti-human IgG was used as a secondary antibody and NBT/BCIP as substrate solution to develop signal.

ELISA: Use at 2-4 µg/mL for detecting p24 antigen.

Conditions for applications such as immunoprecipitation, immunofluorescence and other EIA assays must be determined experimentally by the investigator. Antibody dilutions should be prepared using buffers containing suitable protein in order to stabilize antibody activity.

CAUTION: This product was derived from HIV-1 infected human serum. Use universal precautions.

For Research Use Only NOT for in vitro Diagnostic Use

This product was manufactured in a facility which has a Quality Management System that is ISO 13485 certified.

ZeptoMetrix Corporation
878 Main Street
Buffalo, NY 14202
800-274-5487
www.zeptometrix.com